

# CANON PGI-5 and CLI-8 TECHNIQUE SHEET

## Filling requires:

- Plug Valve
- Clip
- Ink
- Syringe (with syringe adaptor)
- Insertion Tool
- Drill with Stop Mounted Drill Bit
- Chip re-setter



## Procedure

### Drilling

Start the process by drilling the cartridge. This operation is best performed using a bench press drill. If not available use a hand held power drill.

- Affix the stop mounted drill bit to the drill and set to a slow speed.
- Locate the drilling point, immediately below the label.
- Drill at a 90° angle



*Before cleaning*



*After cleaning*

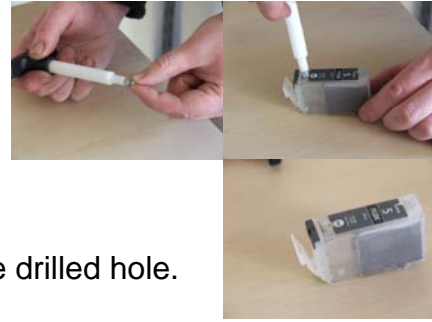
### Cleaning

The recommended procedure uses the Promax Imaging Mini Boiler and Centrifuge.

- Place the cartridges (with the label facing out) into a centrifuge and spin for 10 minutes.
- Using the Promax Imaging Mini Boiler, vacuum boil the cartridges for 20 minutes.
- Place the cartridges in the centrifuge (with the label facing out) and spin for 10 minutes.
- Relocate the cartridges in the centrifuge (label facing in) and spin for 10 minutes.
- Remove the cartridges from the centrifuge and inspect them. If the sponges still appear stained repeat the cleaning process for a second time.

*Please note that in the case of the PGI-5 not all the staining will wash out due to pigment bonding.*

## Fitting The Plug Valve



- Assemble the Plug Valve and O-Ring.
- Fit the Plug Valve to the Insertion Tool.
- Push the Plug Valve (at a 90° angle) into the drilled hole.



## Filling

The filling technique is a two phase process.

- Fit a clip to the cartridge.
- Fit the syringe adaptor to a syringe and draw the full fill amount. (PGI-5 - 27ml; CLI-8 - 12ml)
- Firmly inset the syringe into the plug valve.



### Phase 1

- Holding the syringe, turn the cartridge upside down and tilt to the angle shown (left)
- Slowly fill the ink reservoir until there is no visible air left and the ink is starting to seep into the sponge.



### Phase 2

- Turn the cartridge over (as shown left) and continue to fill at a 90° angle.
- Continue to fill until the desired fill amount has been dispensed.
- Remove the syringe and clean any residue ink from the inside of the plug valve.



N.B. It is very important to the functionality of the cartridge that the top part of the sponge is left dry. If the top of the sponge is wetted with ink, migration of the ink away from the printhead will result. **Ink migration may cause irreparable damage to the printhead.**

## Resetting the Chip

Before using the cartridge the chip must be reset.

Follow the instructions supplied with the re-setter.

When reset, the cartridge led should light up and remain on without flashing.



## **Equipment and Parts required**



### Chip Re-setters

**Promax CanReset - USB**

Part No: CCR-001



**Promax CanReset - Mains**

Part No: CCR-002



### Canon Caps

**For PGI-5 use CC-3**

Also used for BCI-3

**For CLI-8 use CC-6**

Also used for BCI-6



### Promax Plug Valves

**Plug Valve**

Part No: EPV

**Insertion Tool**

Part No: EPV-IT

**Drill**

Part No: EPV-D

**Syringe Adaptor**

Part No: EPV-SYA



### Ink

**PGI-5 - BKP 44**

**CLI-8Bk - BK 97**

**CLI8C - C 122**

**CLI8M - M 122**

**CLI8PC - CL 125**

**CLI8PM - ML 125**

**CLI8R - R 122**

**CLI-8G - G122**